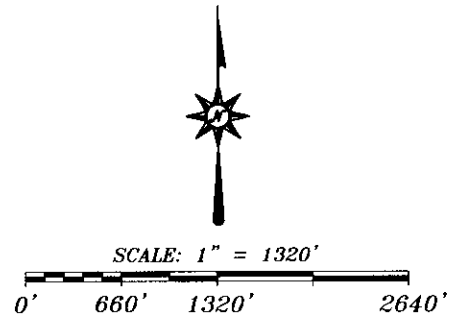
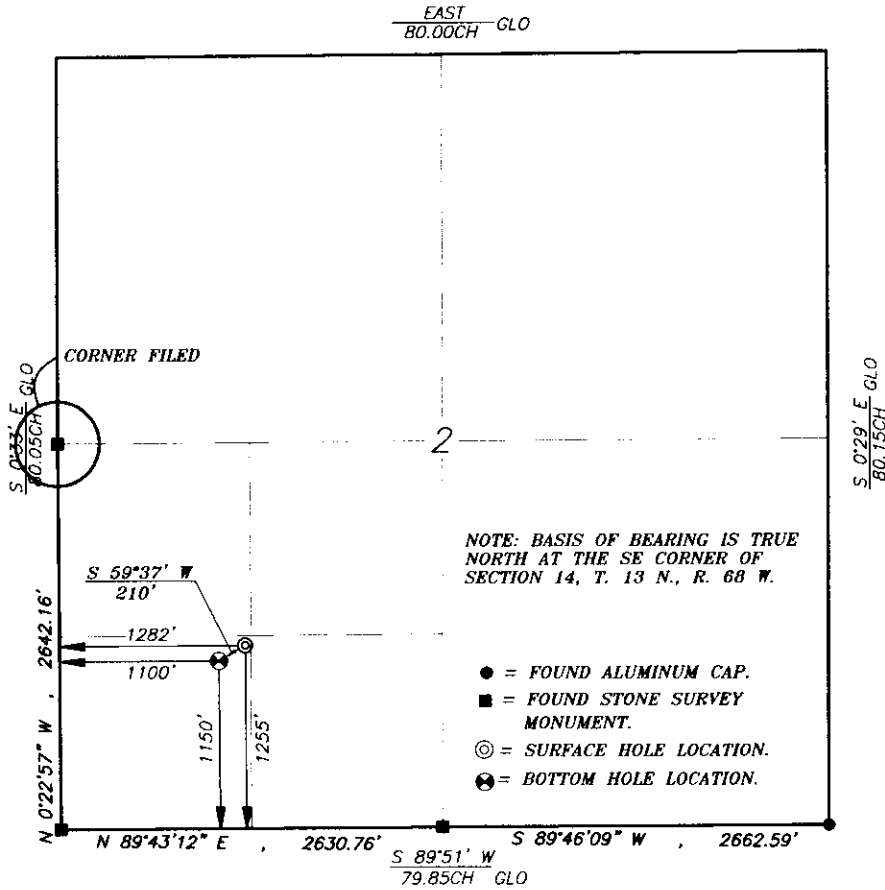


State of Wyoming Corner Record

(In compliance with the CORNER PERPETUATION AND FILING ACT, Wyoming Statutes, 1977, Section 36-11-101, et. seq., and the Rules and Regulations of the Board of Registration for Professional Engineers and Professional Land Surveyors.

Record of original survey and citation of source of historical information (if corner is lost or obliterated). Description of corner monumentation evidence found and/or monument and accessories established to perpetuate the location of this corner. Sketch of relative location of monument, accessories and reference points with course and distance to adjacent corner(s) (if determined in this survey). Method and rationale for reestablishment of lost or obliterated corner.



FOUND:
STONE SURVEY
MONUMENT.

SET:
NOTHING.

GLO:
N/A

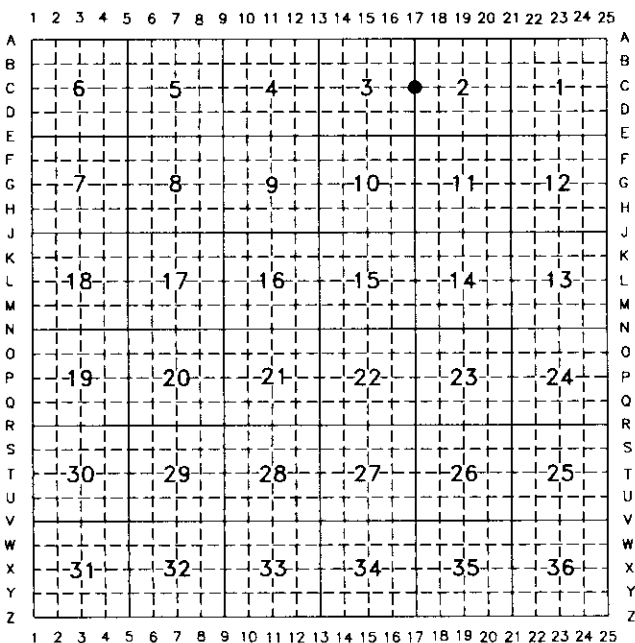
NOTE: BASIS OF BEARING IS TRUE NORTH AT THE SE CORNER OF SECTION 14, T. 13 N., R. 68 W.

- = FOUND ALUMINUM CAP.
- = FOUND STONE SURVEY MONUMENT.
- ⊙ = SURFACE HOLE LOCATION.
- ⊗ = BOTTOM HOLE LOCATION.

Date of Field Work: MONTH OF JANUARY OF 2007

Office Reference: Job No. 3-07

CROSS INDEX DIAGRAM



Firm/Agency, Address

Siek Surveying Service
P.O. Box 1765
Casper, Wyoming, 82602
(307)266-6829

This corner record was prepared by me or under my direction and supervision.

SEAL & SIGNATURE



RECORDED 8/17/2007 AT 12:49 PM REC# 481814 BK# 2021 PG# 1500
DEBRA K. LATHROP, CLERK OF LARAMIE COUNTY, WY PAGE 1 OF 1

(LARAMIE COUNTY)

Corner Name: W/4 Section 2, T 13 N, R 68 W, 6th P.M. Cross-Index No. C-17
SBRPEPLS/PLSW:March 1994